



American Burn Association

44th Annual Meeting

April 24 - 27, 2012

Seattle, Washington



Registration Brochure

TABLE OF CONTENTS

Welcome.....	2
Program Schedule.....	3
General Meeting Information.....	4-5
Sunrise and Luncheon Symposia.....	6
Special Workshops and Forums.....	7-9
Postgraduate Courses.....	10
Committees.....	11
Special Interest Groups.....	12-13
Annual Meeting Tips.....	14
Burn Prevention Poster Contest.....	15
Things To Do in Seattle.....	16
Meeting Registration Form.....	17-18

[CLICK HERE TO REGISTER ONLINE](#)

44TH ANNUAL MEETING OF THE AMERICAN BURN ASSOCIATION

April 24 - 27, 2012

Dear Colleague:

You are cordially invited to attend the 44th Annual Meeting of the American Burn Association, beginning Wednesday, April 25, 2012 with the Opening Ceremony and Presidential Address and concluding with the Annual Banquet on Friday, April 27, 2012.

New for the 2012 Program:

- Three Postgraduate Courses will be held on Wednesday and Thursday afternoons. There will be NO charge for the course or the syllabus; please indicate your preferred session topic when you register.
 - “Improving Social Re-integration Outcomes through Empowerment of the Burn Survivor.”
 - “Difficult Cases, Difficult Decisions: Managing Conflict Priorities on a Multidisciplinary Burn Team.”
 - “Developing Technology.”
- The two Firefighter Courses - Modern Fire Environment and Burn Injury Awareness for Firefighters - will be offered on Wednesday and Thursday morning.
- Friday morning will offer the three most popular Sunrise Symposia repeated and the Best in Categories Poster Presentations.
- Posters Rounds with the Professors will be divided into two days, Wednesday and Thursday, to allow for more in depth discussions.
- Friday Forums will include:
 - “Recap of the Quality Consensus Conference.”
 - “Improving Patient Care through Translational Research.”
 - “International Burn Care.”
 - “Laser Technology in the Treatment of Burns.”

Other highlights of the 2012 Program include:

- The Educational Symposium: “Burn Care in the Outpatient Setting.”
- The Presidential Address by Nicole S. Gibran, MD, FACS, “Our Third Leg: We Have Seen It All Before.”
- The Presidential Plenary, “International Global Health.”
- Two Friday Morning Plenary Sessions; “Disaster Management” and “Return to Work.”
- The “Year in Review” will be presented on Thursday afternoon.
- Custom Seattle 2012 pre-ordered keepsake jackets and long sleeve Tshirts will be available for pick up at registration. Watch for the order form attachment with your Annual Meeting registration confirmation email or on the ABA web site at: www.ameriburn.org.

We look forward to seeing you in Seattle.



The ABA Program Committee
Edward E. Tredget, MD, MSc
ABA Program Committee Chair

PROGRAM SCHEDULE-AT-A-GLANCE

Monday, April 23	Wednesday, April 25	Thursday, April 26	Friday, April 27
Registration Monday 6:30 am - 5:00pm	Poster Viewing 6:30 am - 6:30 pm	Poster Viewing 6:30 am - 1:45 pm	Three Most Popular Symposia Repeated Best in Category Poster Presentations 6:30 am - 7:45 am
ABLS Provider Course† 7:30 am - 5:00 pm	Sunrise Symposia† 6:30 am - 7:45 am	Sunrise Symposia† 6:30 am - 7:45 am	
Special Interest Group & Committee Meetings 8:00 am - 10:30 pm	Registration 7:00am - 6:30 pm	Registration 7:00 am - 5:00 pm	Registration 7:00 am - 4:30 pm
Coding Workshop 2:00 pm - 3:30 pm	New Member Welcome Breakfast 7:00 am - 7:45 am		
Tuesday, April 24	Opening Ceremony, Presidential Address & Awards† 8:00 am - 9:30 am	Presidential Plenary: International Global Health† 8:00 am - 9:30 am	Plenary Sessions: Disaster Management† or Return to Work† 8:00 am - 9:30 am
Registration 7:00 am - 7:00 pm	Exhibit Hall Open 9:30 am - 1:45 pm 4:00 pm - 7:00 pm	Exhibit Hall Open 9:30 am - 1:45 pm	
Special Interest Group & Committee Meetings 7:30 am - 5:00 pm	Break with Exhibitors 9:30 am - 10:00 am	Break with Exhibitors 9:30 am - 10:00 am	Break 9:30 am - 10:00 am
ABLS Instructor/Coordinator Course† 7:30 am - 3:30 pm Educational Symposium: Outpatient Care† 8:00 am - 3:00 pm	Correlative Sessions† Firefighter Course I: Modern Fire Environment 10:00 am - 12:00 pm	Correlative Sessions† Firefighter Course II: Burn Injury Awareness 10:00 am - 12:00 pm	Correlative Sessions† Residential Fire Sprinklers 10:00 am - 12:00 pm
TRACS Workshop 9:00 am - 5:00 pm	Lunch with Exhibitors 12:15 pm - 1:45 pm	Lunch with Exhibitors 12:15 pm - 1:45 pm	Lunch (on your own) 12:15 pm - 1:45 pm
Burn Prevention Workshop 1:00 pm - 4:00 pm	Poster Rounds† 12:30 pm - 1:30 pm	Poster Rounds† 12:30 pm - 1:30 pm	Luncheon Symposia† or Ethics Case Presentation† 12:15 pm - 1:45 pm
Exhibit Hall Open Poster Viewing 3:00 pm - 7:00 pm	Postgraduate Courses† - Burn Survivor Reintegration - Difficult Cases - Developing Technology 2:00 pm - 4:00 pm	Postgraduate Courses† - Burn Survivor Reintegration - Difficult Cases - Developing Technology 2:00 pm - 4:00 pm	Friday Forums† - Consensus Conference - Improved Care Through Research - International Burn Care - Laser Technology 2:00 pm - 4:00 pm
Rehabilitation Workshop 3:30 pm - 5:30 pm	Multi-Center Trials Group Town Hall Meeting 4:15 pm - 5:45 pm	Year in Review† Changing Places Tour of Local Burn Unit 4:15 pm - 5:30 pm	Business Meeting 4:15 pm - 5:00 pm
Opening Reception Exhibit Hall 5:00 pm - 7:00 pm	Wine & Cheese Reception with Exhbitors 5:00 pm - 6:30 pm		Annual Banquet 7:00 pm - 12:00 am

† Denotes Course is Available for Credit

GENERAL MEETING INFORMATION

Plenary Sessions

Plenary Sessions provide information on topics of broad importance and applicability to all attendees. It's a time when all participants come together to hear a topic of interest, led by a panel of experts. This year's plenary sessions are listed below.

Opening Ceremony, Presidential Address, and Awards Presentation†

Wednesday, April 25
8:00 am - 9:30 am

“Our Third Leg: We Have Seen It All Before”

Nicole S. Gibran, MD, FACS
Director, University of Washington Regional Burn Center

Professor, UW Department of Surgery

Harborview Medical Center
Seattle, WA

As a result of attending this activity, the learner should be able to: (1) Evaluate clinical and scientific conceptions that are the basis for burn heritage; and (2) Demonstrate that our scientific discoveries depend on elementary clinical observations at the bedside and on common sense; (3) Illustrate that our future success depends on synergism and our joint efforts will be greater than the sum of individual contributions.

Presidential Plenary†

Thursday, April 26
8:00 am - 9:30 am

“International Global Health”

Moderator: Nicole S. Gibran, MD, FACS

The burn community needs to understand the benefits of reaching out to the International Community to improve the state of burn care in underserved countries.

As a result of attending this activity, the learner should be able to: (1) Understand the roles of burns as part of the global burden of disease; (2) Examine the benefits of reaching out to the International Community to improve the design of burn care in underserved countries; and (3) Analyze the significance of burn injuries as a cause of disability in a developing country.



Plenaries†

New this year, there are two plenaries offered on Friday morning, “Disaster Management” and “Return to Work.”

Friday, April 27
8:00 am - 9:30 am

“Disaster Management”

Speakers: Nicole S. Gibran MD, FACS, & James C. Jeng MD, FACS

There remains a significant gap between the current ability of the burn care community and government to respond to a mass casualty event and produce a positive outcome.

As a result of attending this activity, the learner should be able to: (1) Examine the importance of workable plan to care for 200, 2,000 or 20,000 burn injuries in the event of a mass casualty; and (2) Understand and interpret an effective hospital, local, state, or nationwide response to mass casualties.

“Return to Work after a Burn Injury”

Speakers: Peter C. Esselman, MD, & Kurt L. Johnson, PhD

Return to work is an important goal of any burn rehabilitation program. There is increasing knowledge regarding barriers to return to work after burn injuries and increased recognition of this issue in the burn community.

As a result of attending this activity, the learner should be able to: (1) Understand the barriers to return to work after burn injury, promote and support return to work activities in their patients; and (2) Understand the role of vocational rehabilitation and what services are available to assist with return to work after a burn injury.

Correlative Sessions

The Correlative Sessions present current research results in sessions moderated by experts in the field, with a question and answer period after each presentation. The sessions showcase new information on basic science and clinical management issues in the format of short presentations by investigators of accepted abstracts.

Abstracts are loosely grouped into topic areas, but “room hopping” during the concurrent sessions is encouraged. All presented abstracts will appear in the ABA Annual Program Book, published as a supplement to the *Journal of Burn Care & Research*. ABA members receive the Program Book before the Meeting; others pick up their copy on-site.

More Reasons to Attend

With more than 75 sessions and 2,000 attendees, the ABA Annual Meeting is the best opportunity to enhance knowledge about the latest scientific and practice advances in burn care. Virtually every aspect of the field is explored in this educational meeting—prevention, research, rehabilitation, treatment, administration and more—in a variety of educational formats. Via educational formats like plenary sessions, symposia, and panel discussions, information exchange is facilitated among all team members in burn care.

Continuing Education Units

The American Burn Association is accredited by the Accreditation Council for Continuing Medical Education to provide continuing medical education for physicians.

The American Burn Association designates this live activity for a maximum of 31.5 AMA PRA Category 1 Credit(s)TM. Physicians should only claim credit commensurate with the extent of their participation in the activity.

Courses that are available for credit are denoted by a † (Tuesday-Educational Symposium - 6.0 hrs.; Wednesday - 7.75 hrs.; Thursday - 9.0 hrs.; Friday - 8.75 hrs).

This program will be accredited by a nursing association. Information will be available within the next few weeks regarding the details.

This program has been approved for continuing education through the Commission on Dietetic Registration up to 28 hours.

Registration Fees

Please use the enclosed registration form or register online at www.ameriburn.org. To be eligible for the ABA member registration rate—a \$225 discount over the non-member rate—you must either: (1) be a current member who has paid 2012 annual dues by December 31, 2011; or (2) become a new member who joined in 2012 before the Meeting. Early registration is strongly encouraged. Save \$75 if your registration form with payment is received by the ABA before December 31, 2011.

The registration fee includes: all Postgraduate Courses, refreshment breaks, the opening reception, wine and cheese reception, one Annual Banquet ticket, choice of sunrise & luncheon symposia, and lunch on Wednesday and Thursday. Additional Annual Banquet tickets and “spouse tickets,” (which include admission to the opening reception on Tuesday, April 24; the wine and cheese reception on Wednesday, April 25 and the Annual Banquet on Friday, April 27) may be purchased with your advance registration or on-site.

Residents and Students

Residents and students may register at one-half off the applicable fee. A letter from the faculty advisor confirming the status of the resident and student must be submitted with the registration form. Online registration is not available for resident and student registration.

Student Scholarships

In addition, up to four ABA scholarships are available for students to attend the 2012 Annual Meeting. The scholarships provide up to \$1000 to cover the student's incurred expenses; registration is complimentary for each scholarship winner. If interested, the burn center director must submit a letter to the ABA Central Office outlining the student's background and qualifications for the scholarship.

All letters must be submitted by January 31, 2012. Call the ABA for more information at (312) 642-9260.

Cancellation Policy

Registration cancellation must be made in writing to the ABA and received in our office by mail or fax by April 3, 2012. Cancellations after that date will not be honored. All cancellations will be charged a \$75 administrative fee.

Hotel Accommodations

Special room rates are available at the hotels listed below. Each hotel is within walking distance of the Washington State Convention Center. All meetings will be held at the Convention Center.

All rates have been negotiated to include complimentary internet access in your guestroom.

Each hotel must receive your room reservation no later than March 21, 2012.

Sheraton Seattle Hotel

1400 Sixth Avenue
(888) 627-7056

<http://www.starwoodmeeting.com/Book/burn2012>
\$235 for Traditional single/double rooms

Grand Hyatt Seattle Hotel

721 Pine Street
(888) 421-1442

<https://resweb.passkey.com/go/AmerBurnAssnGHS>
\$245 for Traditional single/double rooms

Hyatt at Olive 8 Seattle Hotel

1635 8th Street
(888) 421-1442

<https://resweb.passkey.com/go/AmerBurnAssnO8>
\$235 for Deluxe single/double rooms

Why It's Important to Book within the Room Block

The ABA has negotiated special room rates for our meeting, only available to ABA attendees. In exchange for the negotiated room rates, ABA has certain minimum contractual obligations with each hotel. Therefore it is important that we fill room blocks we have contracted for so there are not financial liabilities to the Association. The ABA passes along these savings to attendees with low registration fees.

Discount Travel Arrangements

United Airlines has been selected as the official airline for the ABA's 44th Annual Meeting in Seattle. To take advantage of special discounted fares, call United Airlines at (800) 521-4041. Reference the meeting code 590KY.

Remember to identify yourself as an ABA meeting participant.

SUNRISE & LUNCHEON SYMPOSIA†

These symposia are interactive sessions, moderated by experts in the field. Come prepared with information about your own unit, or questions that have surfaced during practice.

At the conclusion of these sessions, the attendee will be able to identify four problems that attendees typically experience in their area. Based on audience input as to how they address these problems, attendees will be able to apply techniques and solutions to their practice settings.

Wednesday, April 25 6:30 am - 7:45 am	Thursday, April 26 6:30 am - 7:45 am	Friday, April 27 6:30 am - 7:45 am
1. New Treatments for Scald Burns	14. Assessing Burn Depth with Instruments	The three most popular Sunrise Symposia will be repeated.
2. Team Building/ Critical Communication Training in the Burn Unit	15. Resistant Organisms	
3. Quality Improvement for Nursing	16. Pain Management Alternatives to Medication	
4. Pain Management for Outpatients	17. Economic Challenges Facing Burn Units	12:15 pm - 1:45 pm
5. Novel Approaches to Enteral Nutrition in Burn Patients	18. Nutritional Management of the Diabetic Burn Patient	27. Electronic Health Record
6. Rehab Management of Pediatric Hand Burns	19. Prevention of Injuries in the Older Adult	28. Global Outreach
7. Body Image	20. Pain Management in Pediatric Patients	29. Getting the Most Out of Rehabilitation
8. Sleep Deprivation in the Burn Patient	21. Dealing with Addictions in Burn Patients	30. Staffing Ratios and Issues
9. Management of Central Lines in Burn Patients	22. What's Available to Stop the Itch	31. Hospital Acquired Infections and Infection Control in the Burn Unit
10. Management of Hypertrophic Scar	23. Management of Amputees	32. Initiating Tube Feedings in the Critically Ill Burn Patient
11. Assessment and Treatment of Facial Burns	24. Verification	33. Burn Camp
12. New Nursing Initiatives	25. Management of 4th Degree Hand Burns	34. Support Groups - Establishing and Maintaining
13. Top Ten List- A Discussion of Ideas or Interventions That Have Made Our Life Easier	26. Treatment/ Wound Care of Diabetic Burn Patients	35. Prevention of Boutonniere Deformities
		36. Pharmacists in the Burn Unit

Each Symposium is limited to 50 people. Please register early; the Symposia fill up quickly. New this year - the three most popular symposia on Wednesday and Thursday will be repeated Friday morning.

SPECIAL WORKSHOPS AND FORUMS

Monday, April 23

Advanced Burn Life Support (ABLS) Provider Course*†

7:30 am – 5:00 pm

The Provider Course provides guidelines in the assessment and management of the burn patient during the first 24 hrs.

Coding Workshop*

2:00 pm – 3:30 pm

This fast-paced and information packed session will help you code and document to optimize revenue and minimize your risk for an audit. We will discuss proper use of the new skin replacement and substitute CPT codes implemented in 2012, burn wound debridement codes, review Evaluation and Management coding as well as when to bill an E&M code and a procedure on the same day. Additionally, a brief overview of ICD-10-CM will be presented demonstrating common burn diagnosis codes using the new code set.

Tuesday, April 24

ABLS Instructor/Coordinator Course*†

7:30am– 3:30 pm

The Instructor Course is designed to introduce participants to general concepts of teaching and learning and to prepare participants as instructors of the Provider Course

Educational Symposium*†

Burn Care in the Outpatient Setting

8:00 am – 3:00 pm

Course Directors: Caran Graves, RD, MS, CNSD; Anjay K. Khandelwal, MD; and Amalia Cochran, MD, FACS

Target Audience: The newer burn team member

There is a lack of knowledge for all members of the burn team, in particular the new practitioner, regarding issues related to outpatient burn care and transition from inpatient to outpatient. The number of patient contacts in the outpatient setting is probably ten times the number of contacts in the inpatient setting on an annual basis.

As a result of attending this activity, the learner should be able to: (1) Recognize common challenges faced by patients and families in the outpatient burn care setting and use case management to facilitate the outpatient transition process; (2) Educate patients and families in preparation for discharge from inpatient to outpatient; (3) Describe unique features and options for wound care in outpatient burns; (4) Employ best strategies for the management of pain & itch; (5) Recommend appropriate uses of telemedicine in outpatient burn care; (6) Recognize common challenges in Burn Therapy of the outpatient; and (7) Understand the needs of burn survivors (both adult and pediatric) for reintegration.

Tuesday, April 24

SOAR Coordinator Course†

1:00 pm – 4:00 pm

Survivors Offering Assistance in Recovery (SOAR) was designed by a national advisory team of health care professionals and burn survivors to provide a structured volunteer peer support program.

The program also enables the medical centers to create a pool of motivated and trained peer supporters with a minimum expenditure of staff resources.

As a result of attending this activity, the learner should be able to: (1) Describe the framework for successful program implementation; (2) Identify requirements of the SOAR program; (3) Utilize the resources and materials of the SOAR program; (4) Understand the basic elements of giving feedback and managing conflict; and (5) Understand the role of the national organization.

Burn Prevention Workshop

1:00 pm – 4:00 pm

This workshop will feature an update on the National Scald Prevention Campaign and National Juvenile Firesetter Database. The day will end with an opportunity for attendees to share their success stories.

Rehabilitation Workshop

3:30 pm – 5:30 pm

“Etiology and Diagnosis of Common Localized Neuropathies”

This workshop is designed to refresh an individuals' knowledge of diagnosing particular nerves compromised during the treatment of the burned patient. It shall cover nerve anatomy, muscles innervated, sensory loss, muscle testing, treatment, etiology and prevention. Individuals will participate in groups rotating to assigned faculty demonstrators.

TRACS Workshop*

9:00 am – 5:00 pm

The TRACS training workshop will offer a brief Beginner Refresher in the morning, with the remainder of the workshop focusing on the Report Writer feature. Report Writer topics will include the administrative module, navigation and understanding of various types of data elements in the burn registry, analyzing data requests, accessing the Report Writer, using standard reports, creating data table reports, and basic queries. Register early as seating is limited. Lunch is on your own.

SPECIAL WORKSHOPS AND FORUMS CONTINUED

Wednesday, April 25

New Member Welcome Breakfast

7:00 am – 7:45 am

If you're a new ABA member attending the Annual Meeting for the first time, please join your colleagues and ABA leadership for breakfast at this informal networking session.

Firefighters Course I

10:00am – 12:00pm

“Modern Fire Environment and the Impact of Horizontal Ventilation”

Discussion will be on how current in home products impact the fuel load and establish the modern day fire, fire fighters encounter during operations. In addition there will be discussion on how traditional ventilation practices impact the fire environment and if traditional tactics need to be addressed and/or revised.

Thursday, April 26

Firefighters Course II

10:00am – 12:00pm

“Burn Injury Awareness for Fighters”

The course will discuss the associated risks of fire fighting and the design, limitations, and use of protective equipment. There will also be a review of past case studies to determine what we have learned. The importance of receiving proper care for burn injuries will be stressed.

The Year in Review: The Top Burn Journal Publications in 2011[†]

4:15 pm – 5:30 pm

Speakers: Richard L. Gamelli, MD, FACS
David G. Greenhalgh, MD, FACS
Basil A. Pruitt, Jr., MD, FACS
Steven E. Wolf, MD, FACS

As a result of attending this activity, the learner should be able to: (1) Examine top publications in the *Journal of Burn Care & Research*, *Journal of the International Society for Burn Injuries and Wound Repair and Regeneration*, *Journal of Trauma*, and *Burns*; and (2) Review major advances in published burn research.

Thursday, April 26

Changing Places

4:15 pm – 5:30 pm

Course Director: Jason Woods, FF

Did you ever wonder why someone would become a firefighter and choose to enter a burning building? What is it like to actually be in the middle of a blazing inferno and how do you make sure you get back outside safe? You can find the answers to these questions and much more in this year's Firefighter/Burn Team presentation entitled “Changing Places.” Leave the comfort of your profession and join an interactive simulation of the firefighter's job to better understand what they do on a daily basis.

Local Burn Tour

4:45 pm – 5:45 pm

A tour of University of Washington Regional Burn Center will be given and transportation will be provided.

Friday, April 27

Residential Fire Sprinklers- What You Need to Know[†]

10:00 am – 12:00 pm

Moderators: Amy R. Acton, RN, BSN and Michael D. Peck, MD, ScD, FACS

There has been much progress made in the last two decades, but there are still many areas of the country that do not enjoy protection from residential fire sprinklers. Because most legislative efforts occur at the state or provincial level, burn team members can play very influential roles influencing local policy-makers.

As a result of attending this activity, the learner should be able to: (1) Cite examples of and data regarding the effectiveness of residential sprinklers; (2) Identify the past and current history of sprinkler legislation in their community and state; and (3) Apply strategies to influence policy-makers in their community.

Ethics Case Presentation: Facial Transplants[†]

12:15 pm – 1:45 pm

Moderator: Andrea L. Pozez, MD

The understanding of facial transplantation is a new frontier and less than 3 patients have received this procedure in the United States.

As a result of attending this activity, the learner should be able to identify the challenges and lessons learned from the initial efforts in facial transplants.

*Additional fee required--see registration form

†Course Available for Credit

Friday, April 27

Recap of the Burn Quality Consensus Conference[†]

2:00 pm – 4:00 pm

Course Director: Nicole S. Gibran, MD, FACS

Since not all attendees will be able to participate in the Consensus Conference a recap of this conference will be provided. The conference will be held on February 7, 2012 in Washington, DC. The consensus conference will define metrics that can be used to quantify the quality of care that is delivered and success of interventions.

As a result of attending this activity, the learner should be able to: (1) Establish best practice for quality metrics; (2) Define quality and patient safety benchmarks; (3) Determine what other organizations are doing to benchmark patient safety; and (4) Determine how quality metrics can guide clinical trial outcomes, be used in ABA/ACS verification process, and influence differential reimbursement.

Improving Patient Care through Translational Research[†]

2:00 pm – 4:00 pm

Course Directors: Bruce A. Cairns, MD, FACS and Iris H. Faraklas, RN, BSN

While there is a great deal of interest in clinical research in the ABA, basic science and translational science research still play important roles in advancing the field of burn care and ABA members need to have a broader understanding of the translational research. This forum will address the issues of surrounding the planning, performance and interpretation of burn related translational research.

As a result of attending this activity, the learner should be able to: (1) Understand and appreciate the value of burn related research on clinical care and as a result be motivated to participate in research in the future; and (2) Analyze how research has helped in the past and how it will impact the future.

Friday, April 27

International Burn Care[†]

2:00 pm – 4:00 pm

Course Directors: Nathan A. Kemalyan, MD, FACS and Barbara A. Latenser, MD, FACS

There are a variety of international volunteer opportunities in low income countries for burn care practitioners in high income countries. Most burn care practitioners are unaware of the results from previous trips, new opportunities, and efficacy of these volunteer trips.

As a result of attending this activity, the learner should be able to: (1) Evaluate information about volunteer burn teaching/care trips to low income countries; (2) Identify the current volunteer burn teaching/care trips endorsed by the ABA; and (3) Identify the changes that have occurred in burn care due to previous volunteer burn teaching/care trips.

Laser Technology in Treatment of Burns[†]

2:00 pm – 4:00 pm

Course Directors: J. Kevin Bailey, MD and Matthias B. Donelan, MD, FACS

New laser technology is now available in burn depth assessment and treatment of scars. Providers need to be aware of available products, use and validity of tools.

As a result of attending this activity, the learner should be able to: (1) Identify different types of lasers; (2) Understand the application of laser technology; and (3) Accurately assess the technology and allocate resources.

CONCURRENT POSTGRADUATE COURSES

Wednesday, April 25 and Thursday, April 26
2:00 pm – 4:00 pm

POSTGRADUATE COURSE A[†]

Improving Social Re-Integration Outcomes through Empowerment of the Burn Survivor

Course Directors: Amy R. Acton, RN, BSN and Jill L. Sproul, RN, MS

Burn care professionals do not regularly address issues such as improving body image, developing social skills and providing peer support with patients. By addressing these issues, the burn survivor is empowered with recovery tools and necessary support to assist with the re-integration process.

As a result of attending this activity, the learner should be able to: (1) Identify, discuss, and apply psychosocial interventions that promote social skill development and social comfort in community re-integration for burn survivors; (2) Define and describe the role of peer support in burn care as an adjunct to the burn team and its use to address body image and social skill development in burn survivor recovery; and (3) Identify resources and action steps to assist with the delivery of compassionate burn care through continued learning and integration of body image, social skills development, and peer support.

POSTGRADUATE COURSE B[†]

Difficult Cases, Difficult Decisions: Managing Conflicting Priorities on a Multidisciplinary Burn Team

Course Directors: Leopoldo C. Cancio, MD and Heather A. Shankowsky, RN, CCRP

The number of patients with large complicated burn injuries seen at any institution are limited. Because of the complexity of the injuries, these patients require critical care, surgery, and rehabilitative care from many members of the multidisciplinary burn team. As a result, burn team members may have difficulty in prioritizing acute and rehabilitation care plans. Additionally, because of the limited amount of evidence-based medicine in this area, expert opinions and experience are used to guide treatment plans.

As a result of attending this activity, the learner should be able to: (1) Enhance the understanding of the potential outcome for a specific type of patient with difficult and complicated injuries; and (2) Understand the need for specialized centers with dedicated multidisciplinary members.

POSTGRADUATE COURSE C[†]

Developing Technologies

Course Directors: Tammy L. Coffee, MSN, RN, ACNP and Michael A. Serghiou, OTR, MBA

Due to the geographic location of burn centers across North America and overseas, access to burn care may be delayed or unavailable. There is a need to decrease the financial cost associated with outpatient follow-up visits, patient transfer to burn centers for acute care and improved communication among health care providers regarding medical care of burn patients.

As a result of attending this activity, the learner should be able to: (1) Utilize technological advancement of telemedicine to improve patient outcome; (2) Utilize telemedicine to collaborate with burn center team; (3) Become familiar with Joint Commission and CMS standards of practice for telemedicine; and (4) Investigate reimbursement processes for telemedicine related services.

COMMITTEE AND SIG MEETING SCHEDULE

All registered meeting participants are encouraged to attend the SIG meetings which provide opportunities to exchange ideas and network with peers. Committee meetings are limited to appointed ABA members. Room locations will be noted in the Annual Meeting Program Book.

Monday, April 23

Burn Registry Committee	8:00 am – 9:30 am	Aftercare Reintegration Committee	12:00 pm – 2:30 pm
Membership Advisory Committee	8:00 am – 3:30 pm	Bylaws Committee	1:30 pm – 2:30 pm
Firefighters SIG	9:00 am – 12:00 pm	Burn Science Advisory Panel	2:30 pm – 4:00 pm
Burn Prevention Committee	9:00 am – 5:00 pm	Burn Epidemiology SIG	3:00 pm – 5:00 pm
Ad Hoc Coding Committee	9:30 am – 10:30 am	Burn Camp SIG	3:00 pm – 7:00 pm
Education Committee	10:00 am – 11:00 am	ABLS Advisory Committee	3:30 pm – 5:00 pm
NBR Committee	10:00 am – 11:30 am	Verification Committee	4:00 pm – 5:30 pm
Chaplains/Pastoral Caregivers SIG	10:30 am – 12:00 pm	Ad Hoc Conflict of Interest Committee	5:30 pm – 6:30 pm
MAC/SIG Chair Luncheon	11:30 am – 1:00 pm	Canadian SIG	7:00 pm – 10:30 pm
IAC/Gov't Affairs Luncheon	12:00 pm – 1:30 pm		

Tuesday, April 24

Burn Prevention and Federation of Burn Foundation SIG	7:30 am – 11:30 am	Bioengineering/Biophysics SIG	1:00 pm – 3:00 pm
Burn Registry Users SIG	8:00 am – 9:00 am	Nursing SIG	1:00 pm – 4:00 pm
Burn Survivor & Reintegration SIG	8:00 am – 10:30 am	Pediatric Burns SIG	1:00 pm – 3:00 pm
Organization & Delivery of Burn Care Committee	8:00 am – 11:00 am	Nutrition SIG	1:30 pm – 4:30 pm
Research Committee	8:00 am – 11:00 am	Rehabilitation Committee	2:00 pm – 3:00 pm
OT/PT SIG	8:00 am – 1:00 pm	Research SIG	2:00 pm – 5:00 pm
Anesthesiology/Respiratory SIG	9:00 am – 12:00 pm	Pharmacy SIG	3:00 pm – 5:00 pm
International Outreach Committee	9:30 am – 11:00 am	Ethics Committee	3:00 pm – 5:00 pm
Reconstructive SIG	10:00 am – 12:00 pm	Archives Committee	3:00 pm – 4:00 pm
Board of Trustees/Committee Chair Luncheon	11:30 am – 2:00 pm	Burn Center Physicians SIG	3:30 pm – 5:00 pm
Psychosocial SIG	12:00 pm – 3:00 pm	Advanced Practice, Registered Nurse, Physician Assistant SIG	3:30 pm – 5:30 pm
Burn Center Disaster Group SIG	12:30 pm – 2:30 pm		

SPECIAL INTEREST GROUPS 2012

Advanced Practice Registered Nurse/Physician Assistant (formerly Mid Level Providers)

Lee S. Moss, APRN, MS, NP-C (lee.moss@hsc.utah.edu) The program will feature guest speaker John Bishop, PA-C and will discuss APRN/PA coding and billing updates

Anesthesiology/Respiratory

Sam R. Sharar, MD (sharar@u.washington.edu) This SIG provides a forum for anesthesia providers to share information regarding peri-operative care of burn patients including pain management, critical care and respiratory care issues.

Bioengineering/Biophysics

Joseph M. Molnar, MD, PhD (jmolnar@wfubmc.edu) The Bioengineering/Biophysics SIG is a forum for exchange between clinicians and scientists interested in the application of basic physical and engineering science to understanding burn path physiology, development of molecular repair therapeutics and tissue engineering science.

Burn Camp

Nan Edens (Nan.edens@azburn.org) Provides a forum on how to foster a partnership with your local burn center to optimize outreach and camper recruitment.

Burn Centers Disaster

Kathe M. Conlon, BSN, RN, CEM (KConlon@SBHCS.com) This SIG provides a forum for those involved with emergency preparedness to come together and collaborate on various disaster-related issues. The 2012 agenda features an HSS Regional Emergency Coordinator who will offer ideas about how to improve integrative planning efforts between ABA burn centers and local, regional and federal agencies.

Burn Center Physicians

Louis H. Riina, MD (lriina@optonline.net/lriina@lipsg.com) This session is an informal meeting for physicians and others interested in discussing issues such as burn unit management, physician's role, responsibilities, and reimbursement.

Burn Epidemiology

Peter A. Brigham, MSW (pabrigham@gmail.com) The Epidemiology SIG of the ABA provides a forum for exchange between public health and safety professionals, clinicians, and statisticians who are interested in developing a common understanding of the epidemiology of burn and fire injury.

Burn Prevention/Federation of Burn Foundations/IAFFBF

James Floros (jfloros@burninstitute.org) The Federation of Burn Foundations, ABA Burn Prevention Committee, IAFF Burn Foundation and SafeKids will offer a shared program with keynote speaker Mary Marchone from the National Fire Academy. Other topics will include: "Child Abuse in the Burn Community"; an update on the National FEMA JFS evaluation tool from Dr. Ken Fineman; and "Prevention Potpourri" covering updates on a wide variety of topics.

Burn Registry Users

Eldon Stephensen, RN (eldon.stephensen@ucdmc.ucdavis.edu) Provides an opportunity for all users of the Burn Registry to network with other registry users and ABA leadership of the National Burn Repository. Provides a format for updates of N-TRAC burn module and provides a forum for the exchange of information, problem sharing and problem solving.

Burn Survivor and Reintegration

Christine Jurus (jurusch@gmail.com) The program will address topics of intimacy, sexuality and the burn survivor with tools available for professionals and survivors.

Canadian

Edward E. Tredget, MD, MSc, FRCSC (etredget@ualberta.ca) The agenda for this year will include guest speakers Dr. Sarvesh Logsetty of International Burn Care presenting “How to Take Modern Burn Care to Developing Countries” and Dr. Redouane Bouali presenting “Interburns: Creating a low income country teaching model”. The agenda includes 2 guest speakers and 6 selected papers. The meeting provides an opportunity for attendees to meet and discuss issues that are relevant to burn care in Canada.

Chaplains/Pastoral Caregivers

Shirley Massey (smassey@unch.edu) The discussion will focus on the importance of pastoral care on your burn team and participating in research.

Firefighters

Benjamin H. Alder, Fire Captain (docodb@verizon.net) Sacramento Fire Department Assistant Chief Chris Costamagna will give a speech on Liaison Response Teams.

Nursing

Jeanie Leggett, RN, BSN (jleggett@lumc.edu) This year’s program includes guest speaker Dr. Lawrence Gottlieb from the University of Chicago Burn Center. The topic is “What Nurses Need To Know About Reconstruction.” Following the main speaker, we will have an opportunity for break out sessions by areas of interest such as Nurse Managers, Staff Nurses, Educators, etc.

Nutrition

Maggie L. Dylewski, PhD, RD (mdylewski@shrinenet.org) This SIG fosters interaction among professionals through the exchange of nutrition and metabolism information. Team members include clinical dietitians/nutritionist, nutrition support practitioners, dietetic technicians, researchers and others with an interest in nutrition support and metabolism.

Occupational Therapy/Physical Therapy (OT/PT)

Sam K. Yohannan, PT, MS (say9005@nyp.org) The OT/PT SIG will focus on the burn rehabilitation of the shoulder complex. Professors from the University of Washington will provide lectures on anatomy, kinesiology and current evidence. Thereafter, breakout groups will facilitate further exploration by providing hands-on learning, problem solving and discussion. Lab attire recommended.

Pediatric Burns

Bradley J. Phillips, MD (Bradley.Phillips@HealthONECares.com/bjpm2@aol.com) This SIG’s multidisciplinary team will address the devastating consequences of pediatric burn injury. Goals include: facilitating communication and cooperation among individuals and centers of excellence in pediatric burn care; establishing sub-committees to review the world’s medical literature and practices of care; publishing pediatric-based guidelines and protocols; establishing philanthropic funding and support global initiatives.

Pharmacy

Claire Murphy, PharmD, BCPS (claire.murphy@osumc.edu) This SIG provides the opportunity for interactions among professionals interested in the pharmaceutical care of the burn patient. This forum allows for open discussion among colleagues on medical management, pharmacokinetics in burn patients, and research opportunities. Additionally, the program will focus on micronutrients in burn injury.

Psychosocial

Ruth Rimmer (rbrimmer@yahoo.com) The Psychosocial SIG is proud to present our keynote speaker Chuck Bombardier, Phd, ABPP from the University of Washington who will be discussing motivational interviewing.

Reconstructive

Matthias Donelan, MD (mdonelan@partners.org) A forum for those interested in surgical care for the burn survivor. The meeting consists of case presentations and discussion by attendees. All are encouraged to submit cases for PowerPoint presentation to robert.spence@medstar.net.. Advanced submission of cases for presentation is recommended to allow scheduling.

Research

Iris Faraklas, BSN, CCRN (Iris.faraklas@hsc.utah.edu) Guest speaker Dr. Lance Price, Director of the Center for Microbiomics and Human Health at the Translational Genomics Research Institute, will be speaking about his grant-funded translational genomic research assessing cutting edge molecular/metagenomic technologies to address the complexities of human infections, both in burn and chronic wound states. Poster presentations will follow Dr. Price’s lecture. These presentations were selected from abstracts submitted to the Research SIG for consideration and include all areas of patient care.

TIPS FOR NAVIGATING THE ABA ANNUAL MEETING

The ABA Annual Meeting is a large conference, and may seem overwhelming, particularly to first-timers. To help you make it a positive experience, use the following tips and attend the New Member Welcome Breakfast on Wednesday, April 25. Check the schedule of events on the ABA web site (www.ameriburn.org) and in the Program Book prior to your arrival at the Meeting.

Small Group Networking Sessions

Special Interest Groups (SIG's): The SIG's meet before the meeting officially begins. These informal workshop-like sessions, open to all attendees, provide an opportunity to interact and network with people in your areas of interest.

Sunrise and Luncheon Symposia: These early morning breakfast sessions (6:30 am - 7:45 am) and luncheon session (12:15 pm - 1:45 pm) are ideal for learning about interesting topics, and meeting others with similar interests.

Broad Interest Topics

Plenary Session: This is where you'll hear from the leading burn care providers in the ABA, presenting on issues and concerns that are global in nature for the burn team.

Presidential Address and Awards Presentation: The Presidential Address and Awards ceremony opens the Annual Meeting.

Business Meeting: The Business Meeting is open to all ABA members in good standing.

Research Presentations

Correlative Sessions: New information and practice techniques are presented with multiple sessions running simultaneously. Pre-planning what sessions to attend and sharing information with colleagues from your institution is particularly important.

Poster Sessions: Poster sessions are ideal for one-on-one meetings with the authors and investigators presenting their work. Don't pass up this opportunity to not only gain knowledge in your area of interest, but to meet the people behind the studies.

Exhibitor Booths

Throughout the meeting you can visit the Exhibit Hall, where there are hundreds of products and services to explore. Here you will be able to meet with vendors and have "hands on" experience with their products. This is also a great place to meet people and network!

Knowledge and Networking Tips

- Scan the session titles and select the most interesting and relevant to you. Where there are conflicts:
 - Prioritize and read abstracts from those you can't attend
 - Divide sessions among the group from your institution and share notes
 - Be sure to take notes on ideas you can use
- Seek help from anyone whose name-tag ribbon identifies them as a Membership Advisory Committee member.
- Ask your senior colleagues attending the meeting to introduce you to others in your area.
- Make a list of the people you want to see. In the Program Book note the people you would like to meet.
- Bring business cards with your title, telephone number, and e-mail address.
- The social events at the ABA are important opportunities to meet people and learn in an informal setting. Again, ask your senior colleagues to make introductions.
- After the ABA Annual Meeting, follow up with notes or phone calls to people you met, and exchange items and information.
- Attend receptions and hospitality events to help with informal networking and fun!

Following these guidelines will help ensure that your ABA experience will be informative, productive and rewarding. Have a wonderful time at the meeting! *From the American Burn Association Membership Advisory Committee.*

ANNUAL ABA BURN PREVENTION POSTER CONTEST

Calling all members of the burn team!

Here's your chance to increase awareness of burn hazards or prevention messages. Three monetary awards in the amounts of \$500, \$300, or \$200 will be awarded to the top three posters. All awards are paid to the Institutions represented. Winners will be announced during the ABA Annual Meeting in Seattle.

Contest Details/Poster Themes

Posters may address scalds, any single burn or fire prevention problem, a specific population, or multiple etiologies. Posters will be evaluated according to the following criteria: originality of the idea, creativity, quality of the verbal and graphic message, the immediate clarity and positive tone of the message the poster conveys, as well as composition, and other elements of design.

Poster Contest Rules

Please read this page carefully and completely before you start your poster!

1. If the poster does not meet all the judging criteria, the poster will not be judged or displayed.
2. The poster must relate to burn or fire prevention.
3. Total poster size will be 18 X 24 inches and laminated (No FOAM backing).
4. Posters will not be copyrighted.
5. All posters must be original work. It is the responsibility of the entrant to adhere to all copyright laws.
6. It is the responsibility of the entrant to obtain and retain written photo consent from each person depicted in the poster and to forward the original of said consent to the ABA Central Office and a copy to the poster chair.
7. If the content (both verbal and graphic) of the poster portrays any illegal activity, it will be automatically disqualified.
8. If an institutional logo is included, the logo or other acknowledgements should be placed in the lower left hand corner of the poster. Printing should not exceed 18 point type, and should be confined to a 2 x 4 inch space. Names of institutions and/or organizations should not appear in poster text.
9. Any person, institution, organization or poster that does not comply with the poster rules and requirements will be disqualified on submission and will not be eligible for display.
10. The poster shall not have been previously published or presented at a national conference. (It may have been presented at an ABA-endorsed regional meeting.) The poster shall not be displayed or presented in any other format at this current ABA Meeting.
11. One version of the poster and poster abstract form in PowerPoint format must be emailed to the Poster Contest Chair, Cryun@lhs.org and received no later than February 15, 2012. To obtain a poster abstract form link: <http://www.ameriburn.org/2012PosterContestEntryForm.doc>
12. Posters are to be taken to the Burn Prevention Booth by 2:00 pm Tuesday, April 24, 2012 and taken down by 1:45 pm Thursday, April 26, 2012. If the posters are not picked up by the designated time, we are not responsible for their return.
13. Posters will be displayed at the ABA Prevention Booth at the 2012 Annual Meeting. Posters will be judged by members of the ABA Burn Prevention Committee with ribbons placed on the three winning posters.

Late entries will not be accepted.

Any questions, contact Curtis Ryan, RN at Cryun@lhs.org

THE EMERALD CITY...

THERE'S NO PLACE LIKE SEATTLE

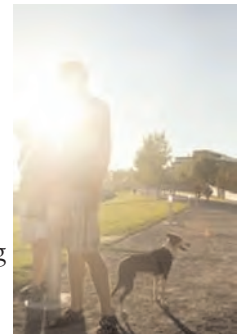
Let's face it, the Emerald City offers a ton of potentially perfect days. Hiking, eating, gallery hopping -- it's all possible. Even if all you have is just one day in Seattle, the below is an ideal way to complete the "greatest hits list" of the major attractions:



The bounty of fresh produce and local goods at the friendly [Pike Place Market](#) has caused countless people to fall head over heels in love with Seattle. It's located right downtown and is a great place to start the day, watching vendors lay out farm-fresh goods and artisan products. Bakeries and coffee shops (including the original Starbucks) abound in the market area and make perfect spots for breakfast and a delicious jolt of java. Be sure to see Rachel, the bronze piggy bank, located near the entrance; the famous fish-throwers at [Pike Place Fish Company](#); the colorful flower, produce and seafood stands on the main level; the kitschy and out-of-the ordinary shops on the lower level; and the row of

heavenly scented food stands along Pike Place. A variety of market tours are also available for getting an insider's view of the market. Go on a tasting tour, a local chef's tour or even a ghost tour.

Nearby on the Seattle waterfront, just minutes from the market, is a relaxing way to take in views of Elliott Bay and the Olympic Mountains. The Olympic Sculpture Park features 20-plus groundbreaking, large-scale sculptures in an awe-inspiring outdoor setting. It's free, by the way.



Also nearby is the [Seattle Center](#), where visitors can take an elevator ride to the 520-foot-high observation deck in the [Space Needle](#), explore the [Experience Music Project | Science Fiction Museum](#) and Hall of Fame, play in interactive exhibits at the [Pacific Science Center](#) or stroll among the many other attractions and cultural institutions within the center.



Aboard a sunset dinner cruise, diners enjoy skimming along Puget Sound with views of downtown Seattle's twinkling lights. [Argosy Cruises](#), [Waterways Cruises](#) and other operators offer delicious gourmet dinners on board, often accompanied by live music or narration. Or cruise to Tillicum Village for a Native American cultural experience to enjoy a traditional salmon dinner.



For those who prefer to stay on solid ground, the tastes of Seattle's famous Northwest cuisine, which focus on farm-to-table ingredients and a fusion of international flavors, are a great bet. Paired with one of dozens of award-winning Washington State wines, it makes for an unforgettable experience.

Pre- or post-dinner musical entertainment in the heart of downtown can include a jazz show at [The Triple Door](#) or a symphony performance at [Benaroya Hall](#).

The biggest attractions in Seattle are big for a reason: They're a great way to get immersed in the city's culture and a boatload of fun, too!

ANNUAL MEETING REGISTRATION FORM

American Burn Association 44th Annual Meeting

April 24 - 27, 2012

[Click Here To Register Online](#)

Step 1: Attendee Information – Please type or print.

ABA Member _____ Non-Member _____
 2012 Dues Must be Paid by 12/31/11 to register at the Member Rate See Step 2 to Join Now and Receive Member Registration Rates

First _____ MI _____ Last _____

Credentials (circle one): MD RN PT OT PhD RD PA-C RT LPN Social Worker FF PharmD Other _____

Discipline (circle one): Physician Mid-Level Provider Nurse Respiratory Nutrition Psychology Social Work
 Basic Science Rehabilitation Therapist Firefighter Burn Survivor Chaplain Pharmacist Non-Profit/Administrator

Organization: _____

Address Home Work _____

City _____ State _____ Zip _____ Country _____

Telephone _____ Fax _____ Registrant's Email _____
 (Registration confirmation will be sent by e-mail)

First Time Attending ABA Annual Meeting _____ Special Needs _____

Step 2: Join or Renew Your ABA Membership Today!

Pay My 2012 Dues - Please renew my membership at the appropriate annual dues level.

M1A Physicians/Fellows.....	\$340
M2A Residents, Nurses and Other Non Physicians.....	\$140
M3A Medical/Other Students.....	\$80

Become a New Member - I am not a member, but would like to join and take advantage of the discounted membership rates.

M1 Physicians/Fellows.....	\$340 Annual Dues + \$65 Initiation Fee = \$405
M2 Residents, Nurses & Other Non Physicians.....	\$140 Annual Dues + \$65 Initiation Fee = \$205
M3 Medical/ Other Students.....	\$80 Annual Dues + \$65 Initiation Fee = \$145

Outside the US and Canada — Please Add \$45 to the amounts above

TOTAL Step 2: _____

Step 3: ABA Annual Meeting Registration Fees*

	By Dec. 31, 2011	After Dec. 31, 2011	After March 1, 2012/Onsite
Member	A1 \$575	A2 \$650	A3 \$700
Non-Member	B1 \$800	B2 \$875	B3 \$925
Residents & Students	Take 50% off the applicable fee above. Please include a letter from your faculty advisor confirming status with the registration form. Form will not be processed until letter is on file.		
Educational Symposium	C1 \$100		
Additional Annual Banquet Ticket	C2 \$125		
Spouse Ticket	C3 \$175		
(includes opening exhibitor reception, wine and cheese reception and annual banquet ticket)			

Spouse Name _____

*Please note: If sending in more than four names with one payment, please include a detailed description, i.e. spreadsheet, for each attendee and fees.

TOTAL Step 3: _____

ANNUAL MEETING REGISTRATION FORM

Step 4: Ancillary Courses and Sessions

Advanced Burn Life Support Provider Course

Monday, April 23
7:30 am - 5:00 pm

Nurses, Nurse Practitioners, Therapists, Physician Assistants, Paramedics..... F1 \$250
Physicians, Resident Physicians..... F2 \$375

Advanced Burn Life Support Instructor/Coordinator Course

Tuesday, April 24
7:30 am - 3:30 pm*

Nurses, Nurse Practitioners, Therapists, Physician Assistants..... G1 \$250
Physicians, Resident Physicians..... G2 \$375

*Please identify when and where Provider Course taken:

Location: _____ Date: _____

Coding Workshop H1 Monday, April 23 2:00pm-3:30pm Additional Fee of \$100	TRACS Workshop I1 Tuesday, April 24 9:00am-5:00pm Additional Fee of \$100	SOAR Coordinator Course J1 Tuesday, April 24 1:00pm-4:00pm	Ethics Case Presentation Concurrent with Friday Lunch Symposia K1 Friday, April 27 12:15pm-1:45pm
---	---	---	--

TOTAL Step 4 _____

Additional Courses (No charge)

Sunrise and Luncheon Symposia — Session Numbers only, as listed on page 6.

	First Choice	Second Choice	Third Choice
Wednesday Sunrise	_____	_____	_____
Thursday Sunrise	_____	_____	_____
Friday Lunch	_____	_____	_____

Wednesday/Thursday – 2:00pm-4:00pm

Please choose one of the following
 L1 Postgrad A: Re-integration
 L2 Postgrad B: Difficult Cases
 L3 Postgrad C: Developing Technology

Thursday – 4:00pm-6:30pm
Please choose one of the following

- N1 Changing Places
- N2 Year in Review
- N3 Burn Center Tour

Friday – 8:00am-9:30am
Please choose one of the following

- O1 Disaster Management
- O2 Return to Work

Friday – 2:00pm-4:00pm
Please choose one of the following

- P1 Consensus Conference
- P2 Improved Care Through Research
- P3 International Burn Care
- P4 Laser Technology

Step 5: Payment Information

Check Enclosed for \$ _____

TOTAL Steps 2, 3 & 4 _____

American Express Visa MasterCard

Credit Card Number _____

Expiration Date: _____ Signature _____

Cancellation Policy: Fees include a nonrefundable charge of \$75. There will be no refund for any portion of the meeting after April 3, 2012. Fees due must be accompanied by either credit card or check in US funds. Faxed forms must be accompanied by credit card information.

Substitution Policy: Substitutions will be charged a \$75 fee when the substitution is of the same value (i.e. member to member; non-member to non-member). When substituting a non-member for a member, the registration rate difference will be charged. ABA memberships are non-transferable. No substitutions after April 3, 2012.

Send Form with Payment To:

American Burn Association
 PO Box 783
 Elk Grove Village, IL 60009
 Phone: (312) 642-9260 Fax: (847) 759-6959
 Email Questions: info@ameriburn.org
 Online registrations: www.ameriburn.org

SPECIAL THANKS TO THE 2011-2012 ABA PROGRAM COMMITTEE

Edward E. Tredget, MD, MSc, FRCSC, Chair
Firefighters Burn Treatment Unit, Edmonton, AB, Canada

Heather A. Shankowsky, RN, CCRP Associate Chair
University of Alberta Hospital, Edmonton, AB, Canada

Leopoldo C. Cancio, MD
US Army Institute of Surgical Research, Ft. Sam Houston,
TX

James H. Holmes, IV, MD, FACS
Wake Forest University Medical Center, Winston-Salem,
NC

Annemarie O'Connor, MSN, FNP-BC
University of Chicago Burn Center, Chicago, IL

Ravi Shankar, PhD
Loyola University Medical Center, Maywood, IL

Ronald J. Siarnicki, Fire Chief
National Fallen Firefighters Foundation, Crofton, MD

Joan M. Weber, RN, BSN, CIC
Shriners Hospitals for Children, Boston, MA

Gretchen J. Carrougher, RN, MN
University of Washington Regional Burn Center, Seattle,
WA

Marcia M. Halerz, RN, BSN, MBA
Loyola University Medical Center, Maywood, IL

Matthew B. Klein, MD
University of Washington Regional Burn Center,
Seattle, WA

Michael A. West, MD, PhD, FACS
San Francisco General Hospital, San Francisco, CA

Amalia Cochran, MD, FACS, *ExOfficio*
University of Utah Hospital Burn Center, Salt Lake
City, UT

Tammy L. Coffee, RN, MSN, ACNP, *ExOfficio*
MetroHealth Medical Center, Cleveland, OH

Nicole S. Gibran, MD, FACS, *ExOfficio*
University of Washington Regional Burn Center,
Seattle, WA

Kathleen A. Hollowed, RN, *ExOfficio*
The Burn Center at Washington Hospital Center,
Washington, DC

Ingrid S. Parry, MS, PT, *ExOfficio*
Shriners Hospitals for Children, Sacramento, CA

Jill L. Sproul, RN, MS, *ExOfficio*
Santa Clara Valley Medical Center, San Jose, CA



American Burn Association
311 S. Wacker Drive, Suite 4150
Chicago, IL 60606
(312) 642-9260
www.ameriburn.org

IMPORTANT DATES

December 31, 2011

Last day for current ABA members to pay 2012 dues
and receive a discount on meeting registration.
DEADLINE FOR "EARLY BIRD" REGISTRATION

April 3, 2012

Deadline for Registration Cancellations.
NO REFUNDS AFTER THIS DATE.

March 21, 2012

Hotel reservation deadline



American Burn Association
311 S. Wacker Drive, Suite 4150
Chicago, IL 60606
(312) 642-9260
www.ameriburn.org